

These are the notes referred to on the following official copy

The electronic official copy of the title plan follows this message.

Please note that this is the only official copy we will issue. We will not issue a paper official copy.

This official copy was delivered electronically and when printed will not be to scale. You can obtain a paper official copy by ordering one from HM Land Registry.

There is an/are application(s) pending in HM Land Registry and if we have only completed the mapping work for a pending application affecting the title concerned, such as a transfer of part:

- additional colour or other references, for example 'numbered 1', may appear on the title plan (or be referred to in the certificate of inspection in form CI), but may not yet be mentioned in the register
- colour or other references may also have been amended or removed from the title plan (or not be referred to in form CI), but this may not be reflected in the register at this stage.

This official copy is issued on 06 February 2024 shows the state of this title plan on 20 March 2023 at 16:38:09. It is admissible in evidence to the same extent as the original (s.67 Land Registration Act 2002).

This title plan shows the general position, not the exact line, of the boundaries. It may be subject to distortions in scale. Measurements scaled from this plan may not match measurements between the same points on the ground.

This title is dealt with by the HM Land Registry, Birkenhead Office .

© Crown copyright. Produced by HM Land Registry. Reproduction in whole or in part is prohibited without the prior written permission of Ordnance Survey. Licence Number 100026316.

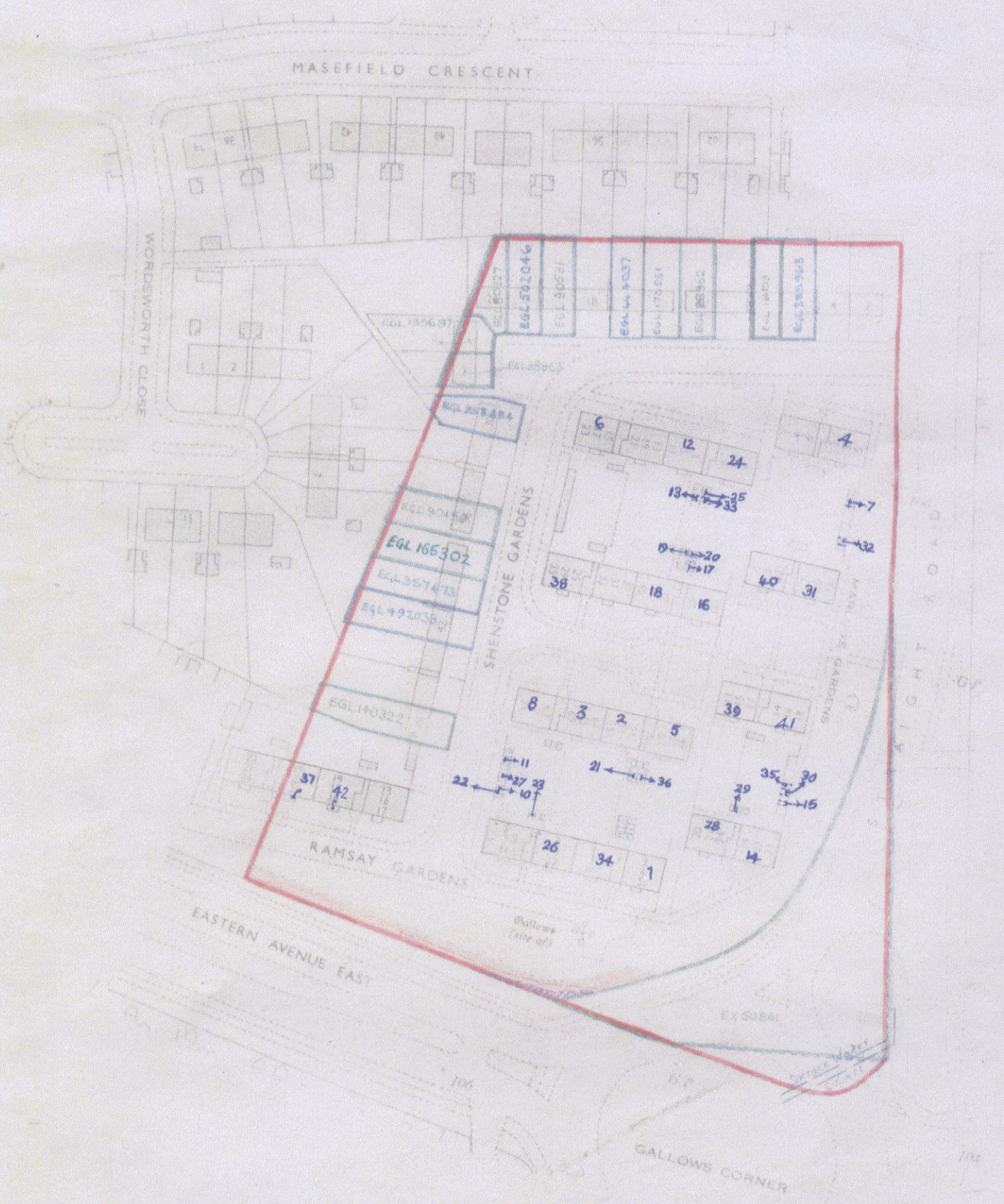
H.M. LAND REGISTRY

TITLE NUMBER

EX8770

ORDNANCE SURVEY PLAN REFERENCE	COUNTY GREATER LONDON	SHEET	NATIONAL GRID TQ 5390	SECTION R
Scale: 1/1250			© Crown copyright 1971	

BOROUGH OF HAVERING



FILED PLAN
H.M. LAND
REGISTRY
BMB
8-82