



North East London

# Havering Health Special Educational Needs and Disabilities (SEND) Update – December 2022

---

Doug Tanner

Children's Services Programme Lead

NHS North East London

Havering Place Based Partnership

# Integrated Care Board SEND Health Input

- Commissioning of Paediatric:
  - Speech and Language Therapy
  - Physiotherapy
  - Occupational Therapy
- Access to service dependant on need and health staff work closely with Local Authority Special Educational Needs (SEND) teams
- Designated Clinical Officer (DCO) ratifies health section of Education, Health and Care Plan

# Post 16 Pupils in Havering

Academic year	Cognition and Learning	Communication and Interaction	SEMH	Physical and/or Sensory	Totals
2017/18	145	126	36	33	340
2018/19	175	182	49	50	456
2019/20	203	197	72	56	528
2020/21	203	194	85	51	533
2021/22	203	195	84	53	535
2022/23	203	195	85	53	537
2023/24	206	197	87	54	544
2024/25	210	201	89	55	555
2025/26	213	205	90	56	564

Projections for Havering Post 16 pupils with an Education Health Care Plan (EHCP) attending a Havering or out borough provision.

# Combined EHC Plans and Statements



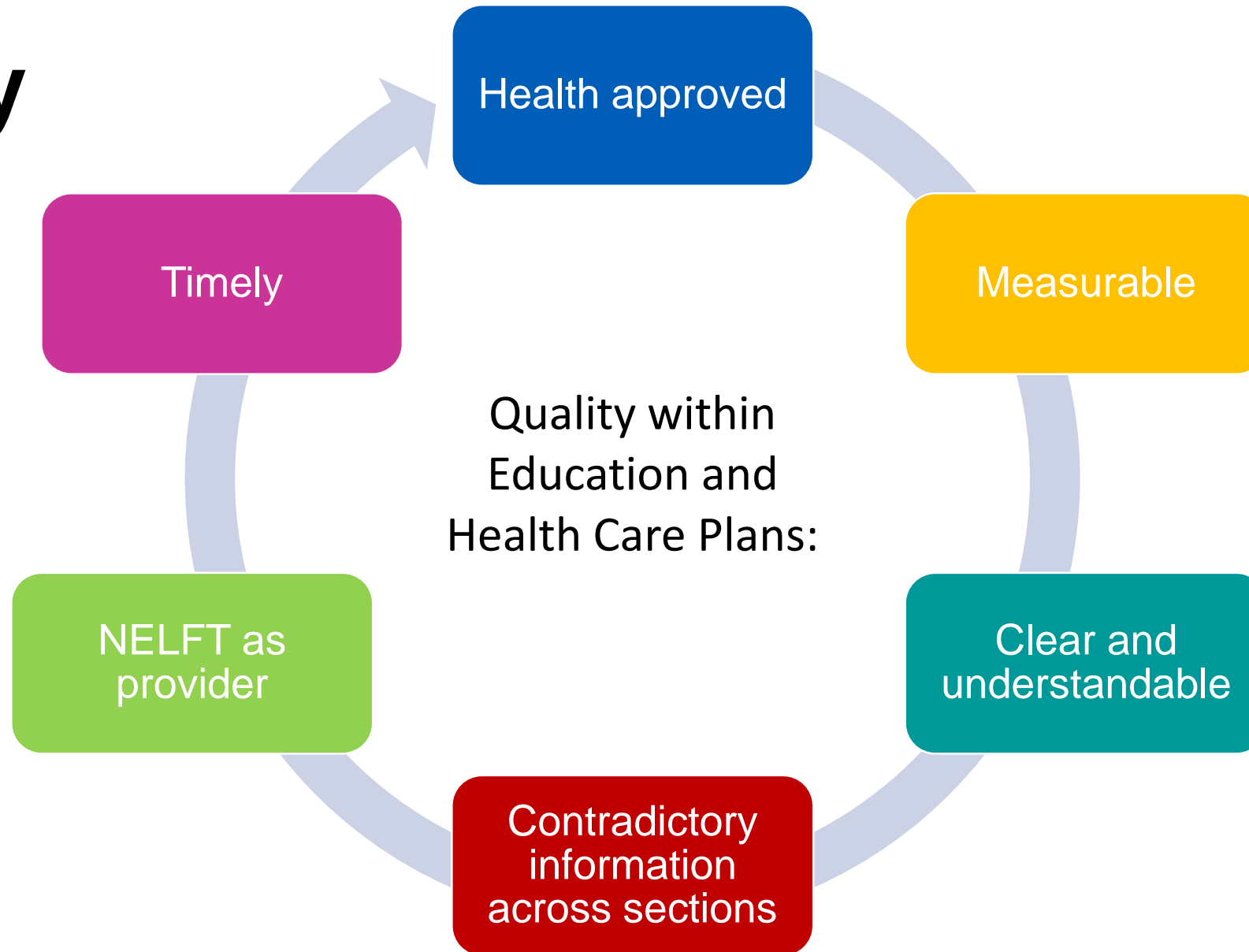
Area	2015/ 16	2016/ 17	2017/ 18	2018/ 19	2019/ 20	2020/ 21	2021/ 22	% rise between 2015 and 2022
B&D	942	1,012	1,092	1,178	1,326	1,460	1,570	66.67%
<b>Havering</b>	<b>913</b>	<b>931</b>	<b>997</b>	<b>1,078</b>	<b>1,209</b>	<b>1,352</b>	<b>1,447</b>	<b>58.49%</b>
Redbridge	1,426	1,467	1,521	1,603	1,728	1,962	2,076	45.58%
London	39,473	41,141	43,377	46,576	50,810	55,856	60,250	52.64%
England	236,806	242,184	253,679	271,165	294,758	325,618	355,566	50.15%

The number of children with a combined EHC Plan and Statement in Barking and Dagenham, Havering, Redbridge, London and England between 2015/16 and 2021/22

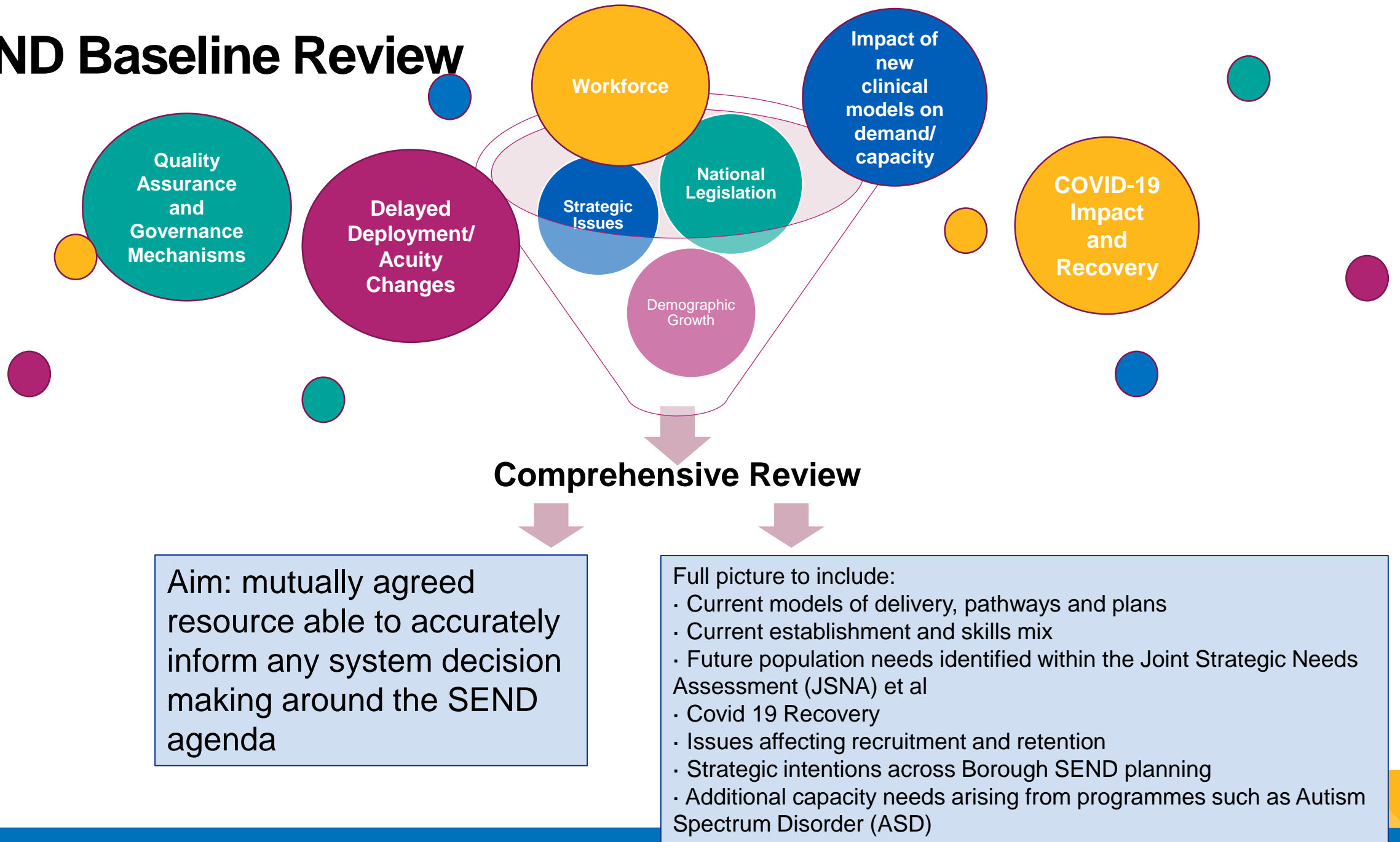
***SEN in England Census Data***

For Havering, the % rise in children with combined EHC Plans and Statements exceeds the national and regional averages.

# Quality



# SEND Baseline Review



# BHR Health and Care Workforce Academy

## Strengthen provision

- Established Sept 2021 to strengthen and integrate workforce planning for benefit of health and care provision across BHR

## Grow our own

- 'Grow our own' principle-working with local organisations, educators and residents to grow the workforce in BHR boroughs

## Data-led

- Evidence based data led solutions-has co-developed the workforce data dashboard

## System working

- Build workforce capacity and resource management
- Supporting medium to long term solutions for new careers in local communities and maximising opportunities for system working

## AHPs

- Allied Health Professionals is a core workstream for the academy
- Forging relationships with training and education providers to increase entry level roles and development opportunities



**Redbridge  
Therapy Review:  
Learning will be  
shared across  
Havering**

Findings and outcomes:

- Concerns identified around the timeliness and quality of therapy provision in special school
- Safeguarding, commissioning and quality review completed
- 1 year pilot commenced September 2022 – new ways of integrated working
- Long term plan of a new robust evidenced-based, Therapy Service Model and service specification, meeting the needs and improving health outcomes for children and young people with SEND attending special needs schools. September 2023 introduction