

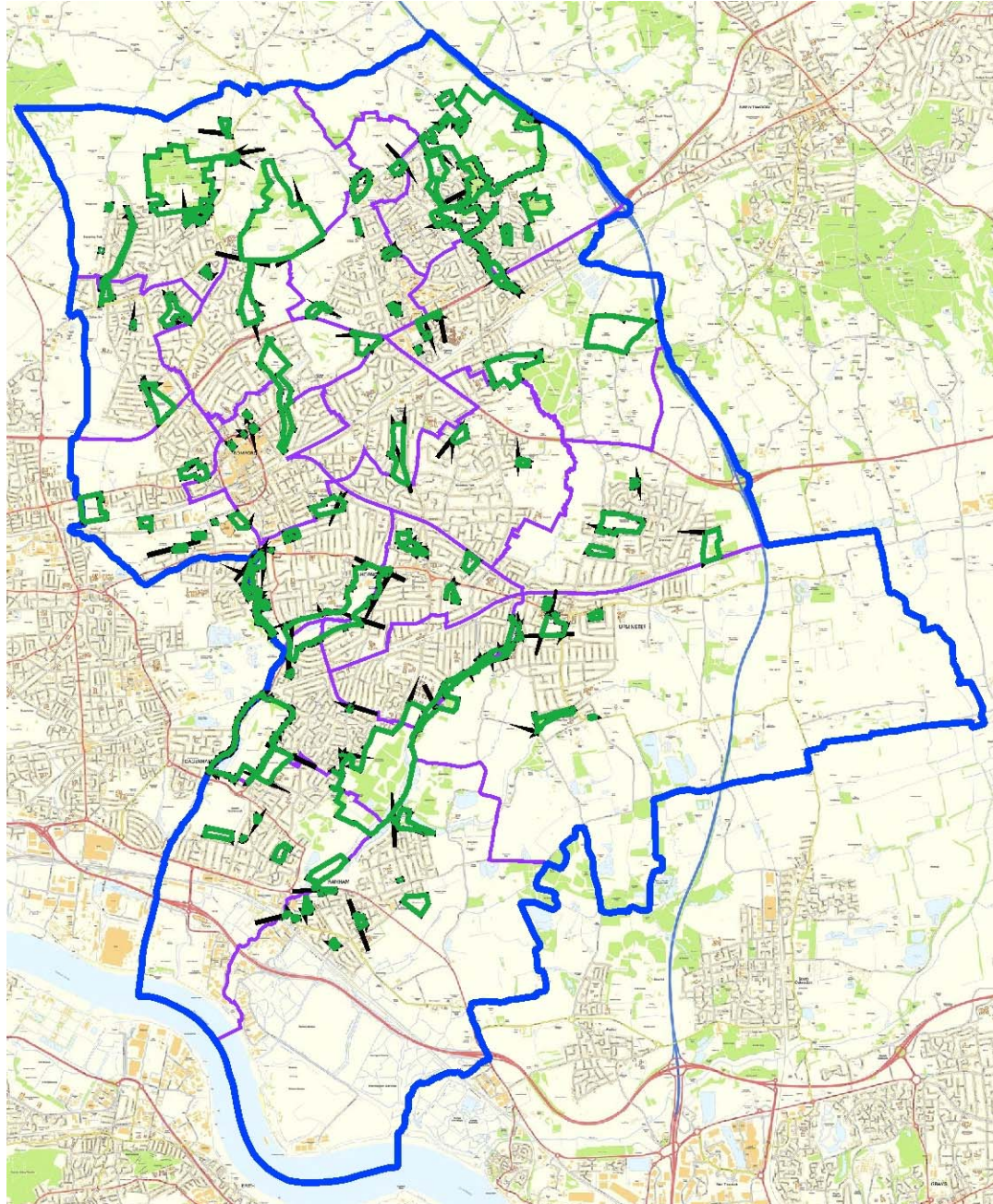
# Parks and Open Spaces



St Andrews Park



# 100 Parks and Open Spaces





# Hornchurch Country Park







Bedfords Park







Conservation Management









Historic Landscapes







Cottons Park



Hornchurch Country Park



Harrow Lodge Park



Lodge Farm Park



# Areas of Work

- Management of 100 parks and open spaces, including 4 country parks
- Management of Ranger Service and apprentices
- Management of Parks Maintenance (infrastructure and play area repairs)
- Management of Hall Lane Mini Golf Course
- Parks Monitoring and formal inspection system
- Management of 3 tier play area inspection system
- Capital project management
- External funding applications
- Development and implementation of Parks and Open Spaces strategy
- Management of allotments and liaison with allotment societies
- Management of Public Rights of Way and liaison with Ramblers
- Liaison with Friends Groups, including volunteering and management of 'Official Status' initiative
- Management of Green Flag applications (13 currently held) and London in Bloom Awards for parks (25 including 1 category winner and discretionary award)
- Event and activities management, including fairs, circuses and 'boot camps'
- Management of leases and licences, including bowls, cricket, tennis, fishing, cafes and fishing clubs.
- Management of sports pitch hire, including football and rugby
- Marketing and promotion via social media (Parks Facebook page), website, brochure and press releases





Norfolk Road Allotments

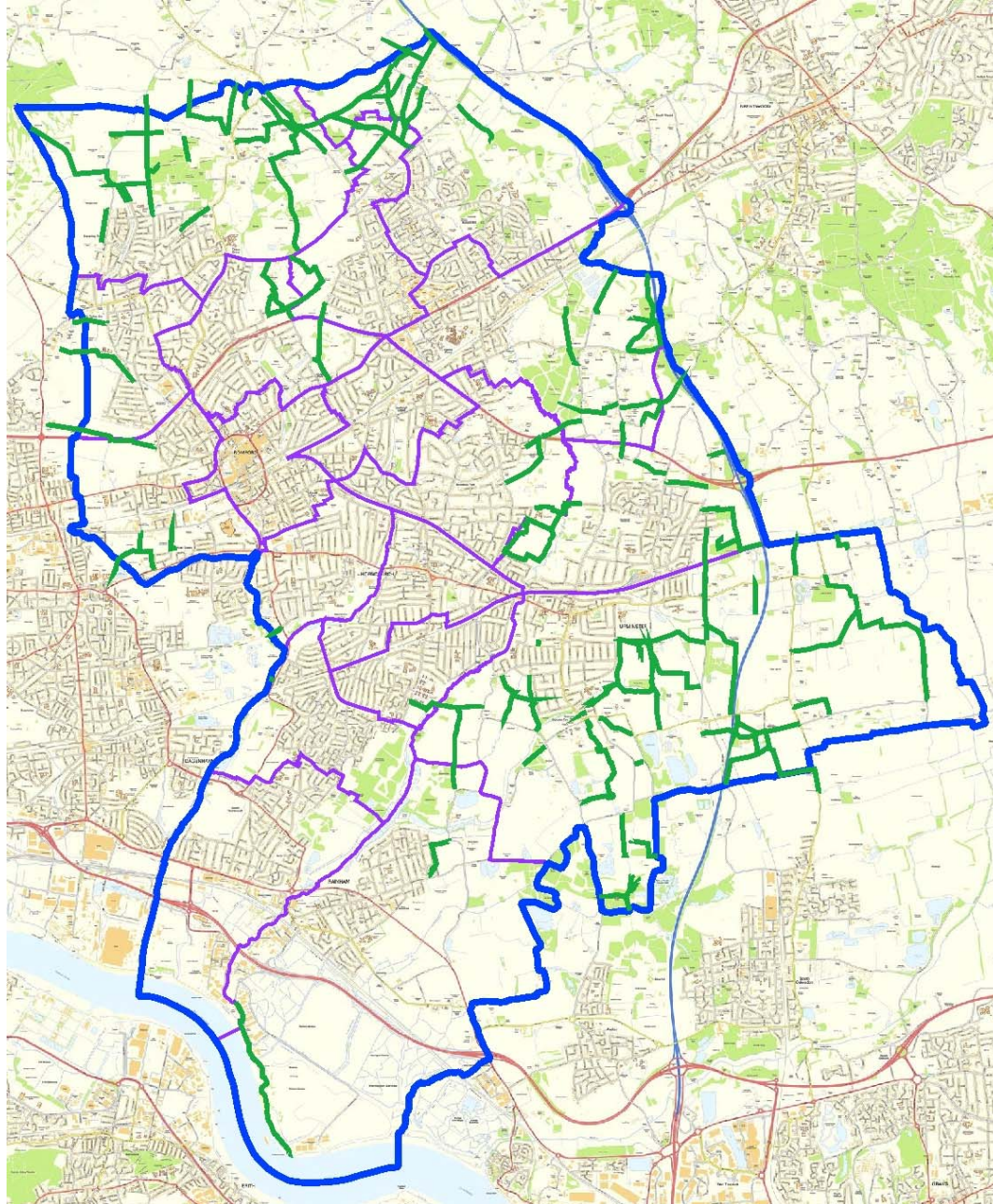




Robin Close Allotments



# 98 Rural Public Rights of Way



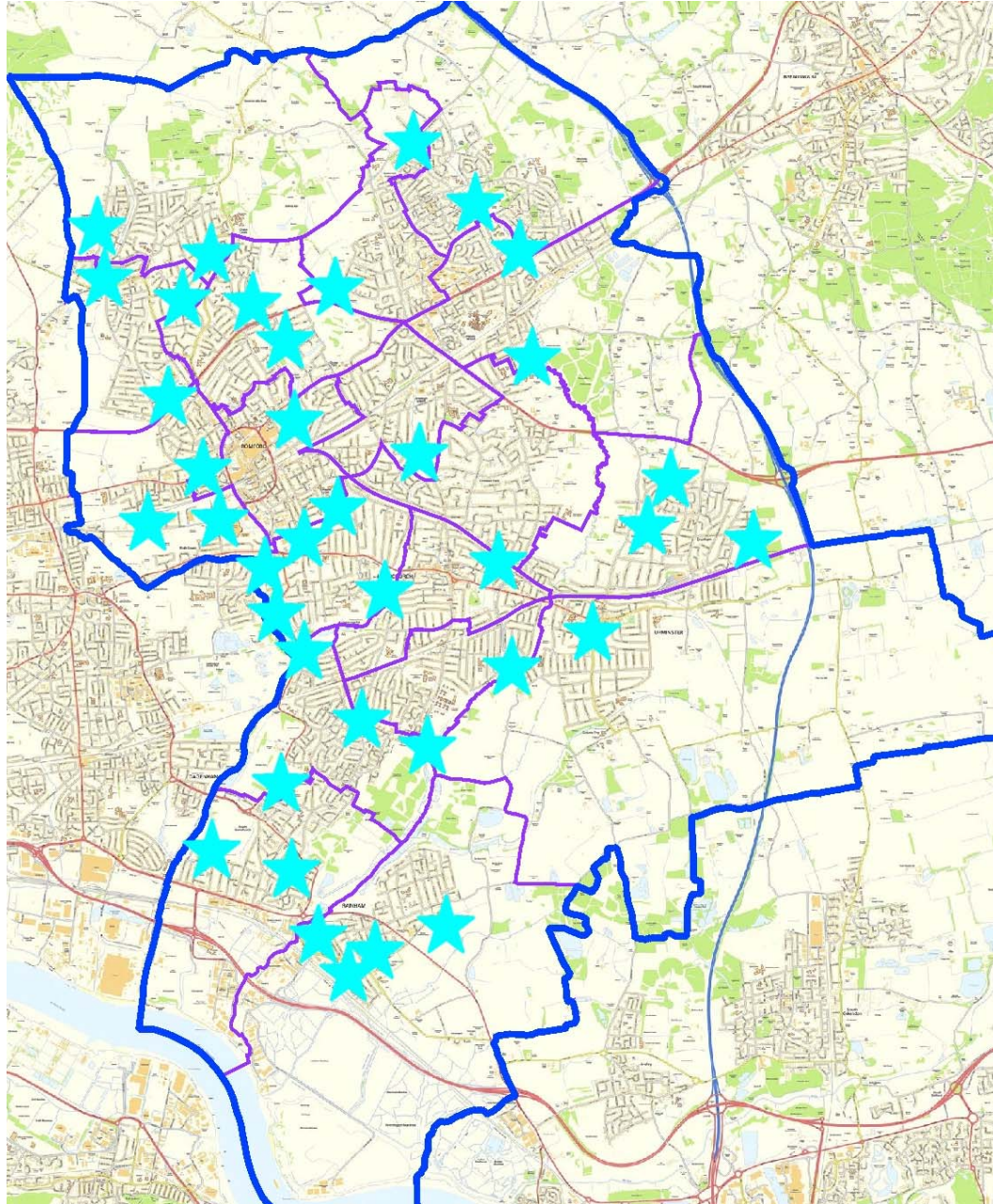




Havering Ramblers



## 41 Play Areas (26 Recreation/Fitness Areas)







Cranham Brickfields





Raphael Park



# Parks Maintenance

Hall Lane Playing Fields





# Hall Lane Mini Golf Course





# Friends Groups



Rise Park



Raphael Park



Upminster Park



# External Funding



King Georges Playing Field



Harold Wood Park



Upminster Windmill



# Parks Facebook Page

Hasving Parks & Open

Hasving Parks & Open Spaces

Home

Page

Messages

Notifications

Insights

Publishing Tools

Settings

Help

Be the first to add a post.

Create post

REVIEWS

PEOPLE ALSO LIKE

Romford Recorder

Media/News/Publishing

Hasving Police

Community

Queens Theatre Hornchurch

Theatre

Government Organisations in Romford, United Kingdom

LIKED BY THIS PAGE

Friends of Raphael & Lodge Farm ...

Essex Wildlife Trust Bedfords Park

Friends of Ingrebourne Valley and...

JUTSUMS PARK

YOUR PARK YOUR SAY

WILDLIFE? FITNESS? FOOTBALL? SPORT? DOG WALKING? PICNICS? PLAY AREA? WALKING? MORE BINS? GARDENS?

COMPLETE OUR ONLINE SURVEY

www.havering.gov.uk/JutsumsPark

www.facebook.com/LBH.Parks

Hasving

306 people reached

Like

Comment

Share

John Black likes this.

1 share

Write a comment...

Hasving Parks & Open Spaces

shared Essex Wildlife Trust Ingrebourne Valley Visitor Centre's post.

Published by Richard Cottam [?] · 19 January at 13:25 ·

THIS WEEK

5

Page Likes

335

Post Reach

0

Website Clicks

4 of 5

Response Rate

1 hour

Response Time

Recent

2015

2014

2013

English (UK) · Privacy · Terms · Cookies · Advertising · AdChoices · More

Facebook © 2016



# Green Flag Awards



Since 2007 following the establishment of a dedicated parks team and regular capital investment the key parks across the borough have achieved the prestigious Green Flag Awards. This has now reached 13 awards:

**Harrow Lodge Park– *new in 2017***

**Haynes Park– *new in 2017***

**Bedfords Park**

**Upminster Park**

**Hylands Park**

**Lodge Farm Park**

**Harold Wood Park**

**Cottons Park**

**St Andrews Park**

**Lawns Park**

**Raphael Park**

**Central Park**

**Rise Park**





12 Gold, 11 Silver Gilt, 2 Silver



Discretionary Award for Riverside Meadow



Best Floral Display



# Future Projects

- Application for Green Flag Award at Langtons Gardens and retention of existing sites
- Applications for London in Bloom Awards for parks and contribution in Best Borough category
- Working with private companies who want to invest in our parks and help generate income.
- Research through the London Parks Benchmarking Group and Parks for London to collate ideas for additional income generation.
- Improved publicity of our parks and open spaces with new brochure, web-pages and use of the events management website 'Filmapp'.
- Improved parks condition and safety inspections with the use of the 'Commontime' software (as currently used on Housing Estates).
- Improved parks tree management with establishment of regular surveying and recording system.
- Produce an up to date Parks Strategy linking with the corporate vision