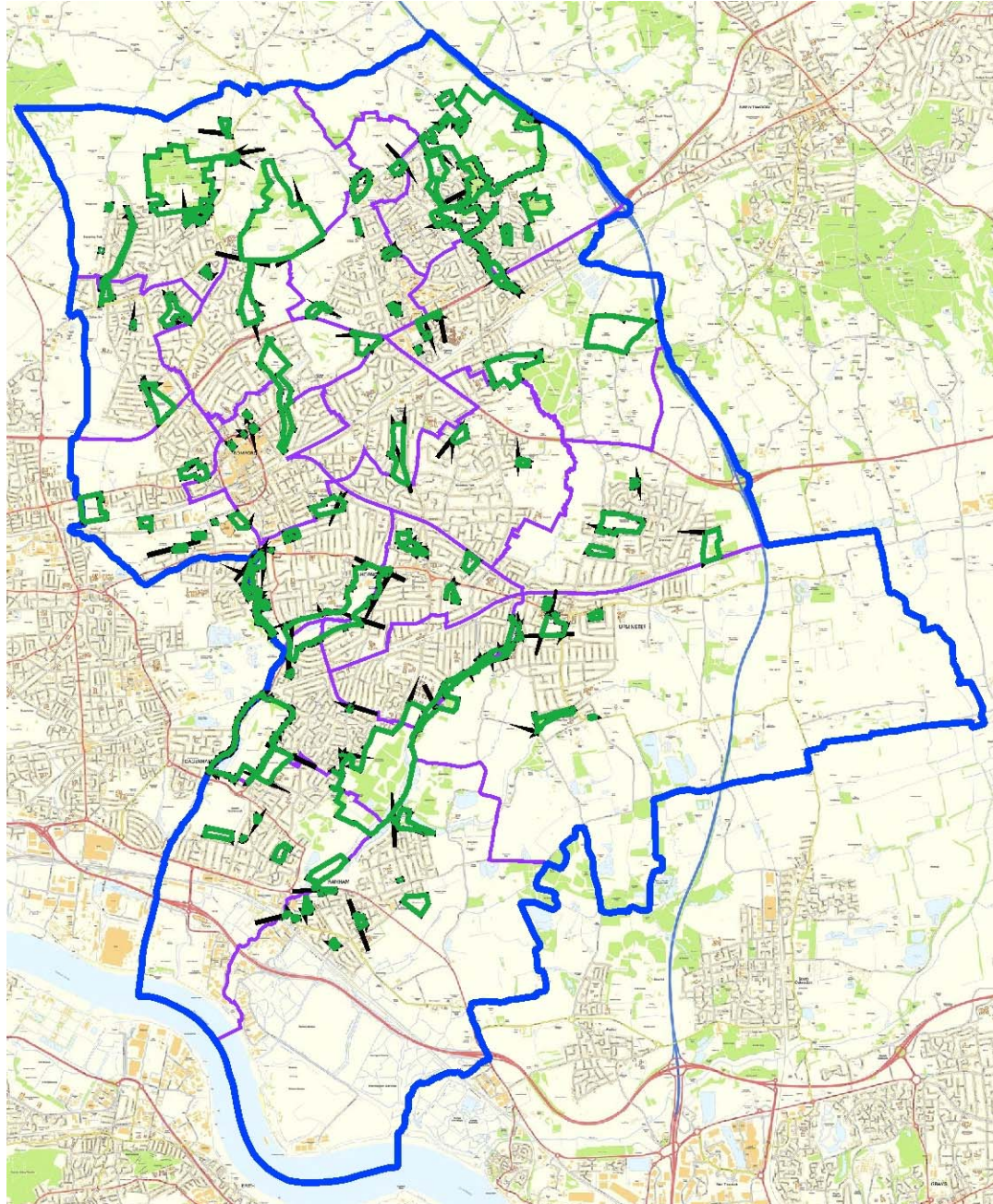


Parks and Open Spaces



St Andrews Park

Over 100 Parks and Open Spaces



Hornchurch Country Park





Bedfords Park





Conservation Management





Historic Landscapes





Cottons Park



Hornchurch Country Park



Harrow Lodge Park

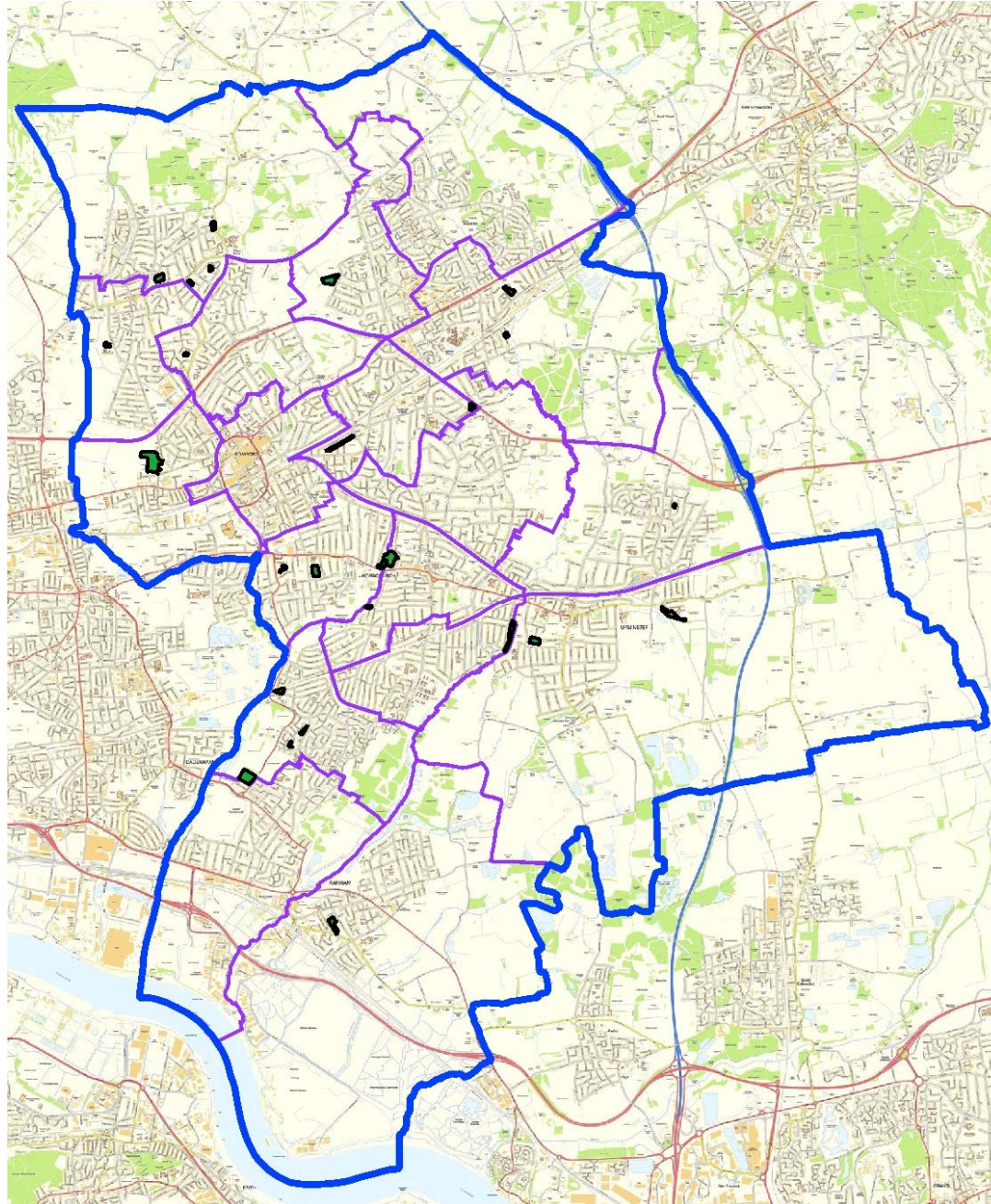


Lodge Farm Park

Areas of Work

- Management of 100 parks and open spaces, including 4 country parks
- Management of Ranger Service and apprentices
- Management of Parks Maintenance (infrastructure and play area repairs)
- Management of Hall Lane Mini Golf Course
- Parks Monitoring and formal inspection system
- Management of 3 tier play area inspection system
- Capital project management
- External funding applications
- Development and implementation of Parks and Open Spaces strategy
- Management of allotments and liaison with allotment societies
- Management of Public Rights of Way and liaison with Ramblers
- Liaison with Friends Groups (18), including volunteering and management of 'Official Status' initiative
- Management of Green Flag applications (13 currently held) and London in Bloom Awards for parks (including 10 gold and 3 category winners in 2016) * 2017 results released 22nd September
- Event and activities management, including fairs, circuses and 'boot camps'
- Management of leases and licences, including bowls, cricket, tennis, fishing, cafes and fishing clubs.
- Management of sports pitch hire, including football and rugby
- Marketing and promotion via social media (Parks Facebook page), website, brochure and press releases

27 Allotment Sites



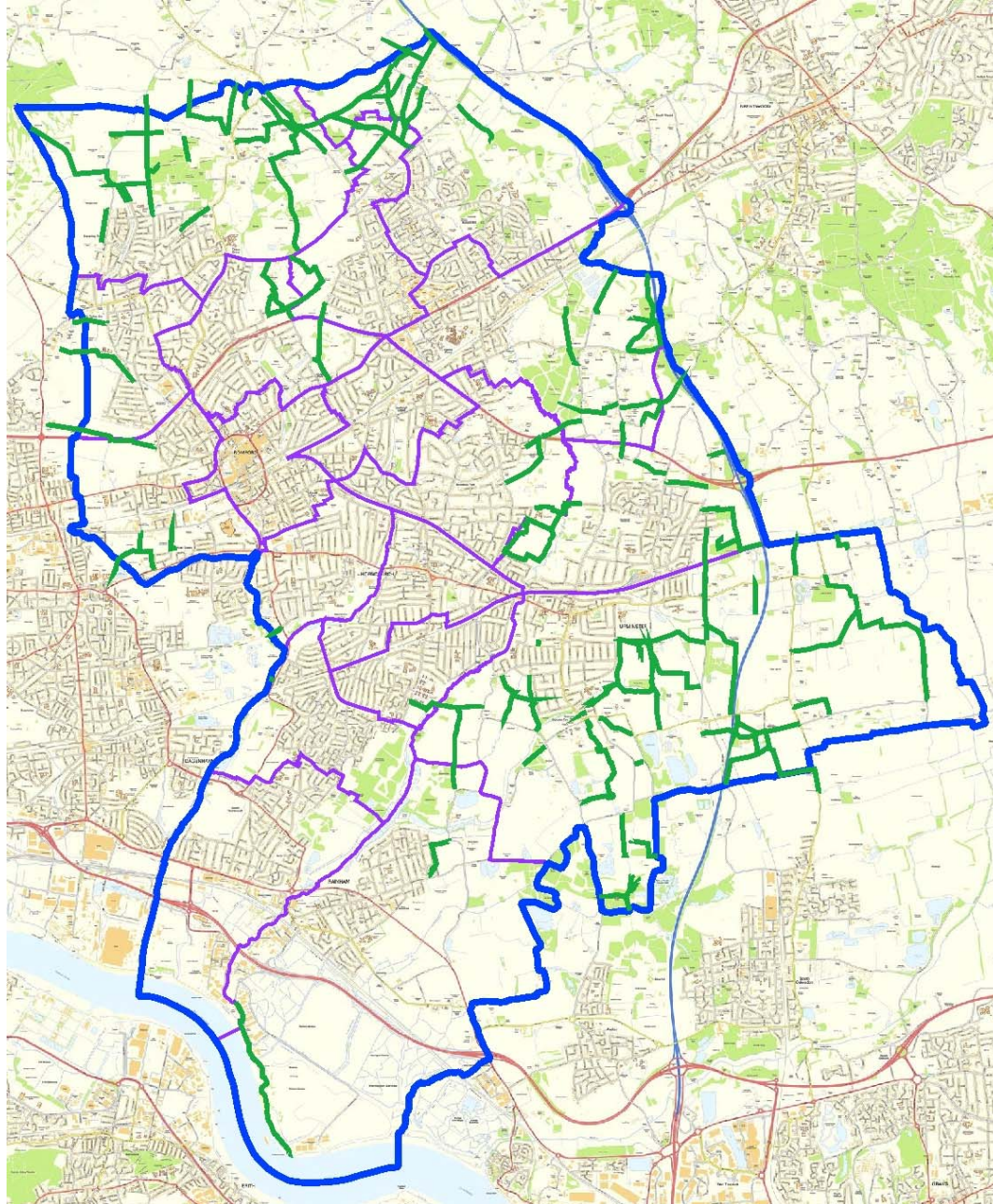


Norfolk Road Allotments



Robin Close Allotments

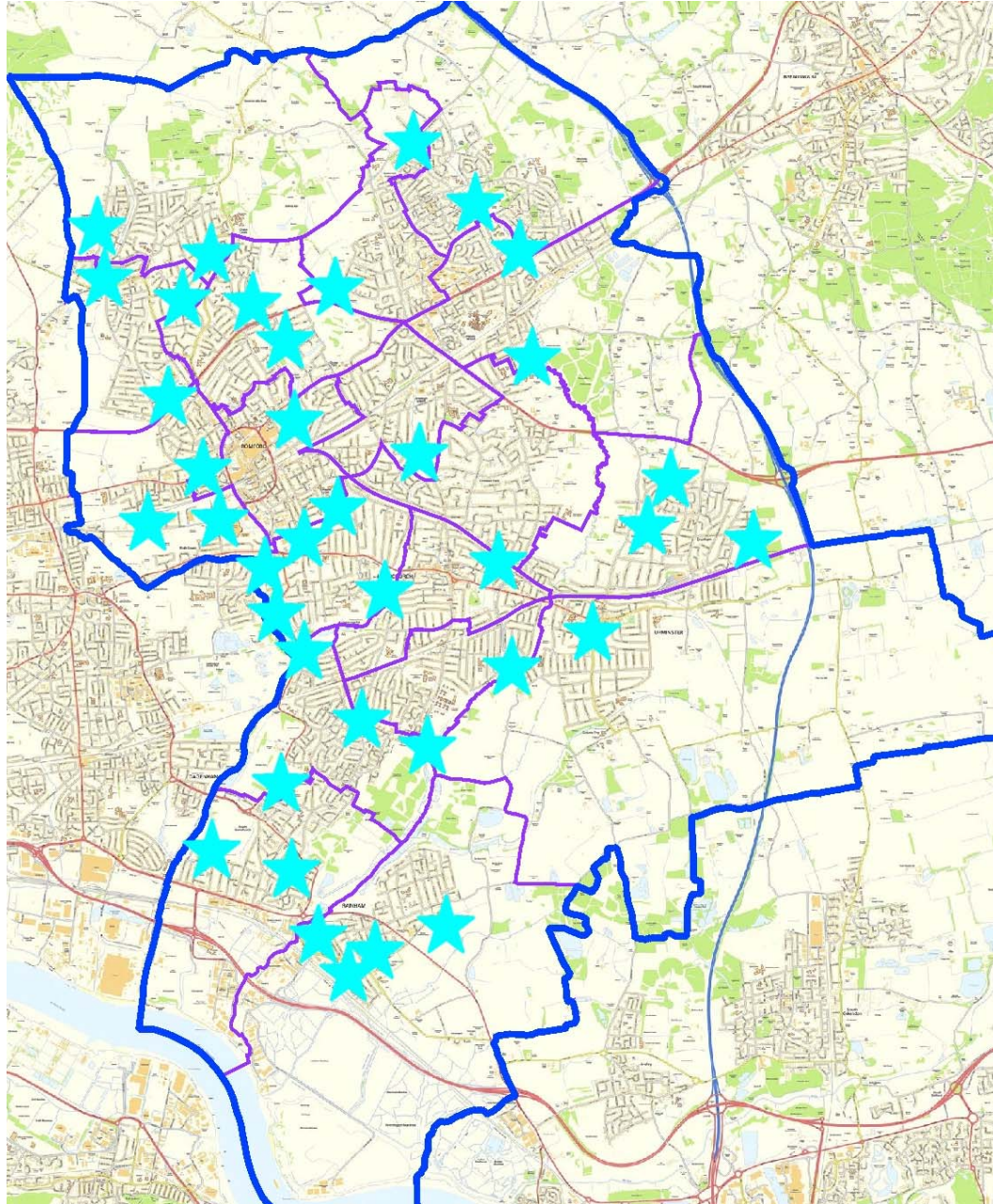
98 Rural Public Rights of Way





Havering Ramblers

41 Play Areas (26 Recreation/Fitness Areas)





Cranham Brickfields



Raphael Park

Parks Maintenance



Hall Lane Playing Fields

Hall Lane Mini Golf Course



Friends Groups



Rise Park



Raphael Park



Upminster Park

External Funding



King Georges Playing Field



Harold Wood Park

Parks Facebook Page

Having Parks & Open

Having Parks & Open Spaces

Home

Page

Messages

Notifications

Insights

Publishing Tools

Settings

Help

Be the first to add a post.

Create post

REVIEWS

PEOPLE ALSO LIKE

Romford Recorder

Media/News/Publishing

Having Police

Community

Queens Theatre Hornchurch

Theatre

Government Organisations in Romford, United Kingdom

LIKED BY THIS PAGE

Friends of Raphael & Lodge Farm ...

Essex Wildlife Trust Bedfords Park

Friends of Ingrebourne Valley and...

JUTSUMS PARK

YOUR PARK YOUR SAY

WILDLIFE? FITNESS? FOOTBALL? SPORT? DOG WALKING? PICNICS? PLAY AREA? WALKING? MORE BINS? GARDENS?

COMPLETE OUR ONLINE SURVEY

www.havering.gov.uk/JutsumsPark

www.facebook.com/LBH.Parks

Having

306 people reached

Boost Post

Like

Comment

Share

John Black likes this.

1 share

Write a comment...

Having Parks & Open Spaces

shared

Essex Wildlife Trust Ingrebourne Valley Visitor Centre's post.

Published by Richard Cottam [?] · 19 January at 13:25 ·

English (UK) · Privacy · Terms · Cookies · Advertising · AdChoices · More

Facebook © 2016

Green Flag Awards



Since 2007 following the establishment of a dedicated parks team and regular capital investment the key parks across the borough have achieved the prestigious Green Flag Awards. This has now reached 13 awards:

Harrow Lodge Park– *new in 2017*

Haynes Park– *new in 2017*

Bedfords Park

Upminster Park

Hylands Park

Lodge Farm Park

Harold Wood Park

Cottons Park

St Andrews Park

Lawns Park

Raphael Park

Central Park

Rise Park

Future Projects

- Application for Green Flag Award at Langtons Gardens and retention of existing sites
- Applications for London in Bloom Awards for parks and contribution in Best Borough category
- Working with private companies who want to invest in our parks and help generate income.
- Research through the London Parks Benchmarking Group and Parks for London to collate ideas for additional income generation.
- Improved publicity of our parks and open spaces with new brochure, web-pages and use of the events management website 'Filmapp'.
- Improved parks condition and safety inspections with the use of the 'Commontime' software (as currently used on Housing Estates).
- Improved parks tree management with establishment of regular surveying and recording system.