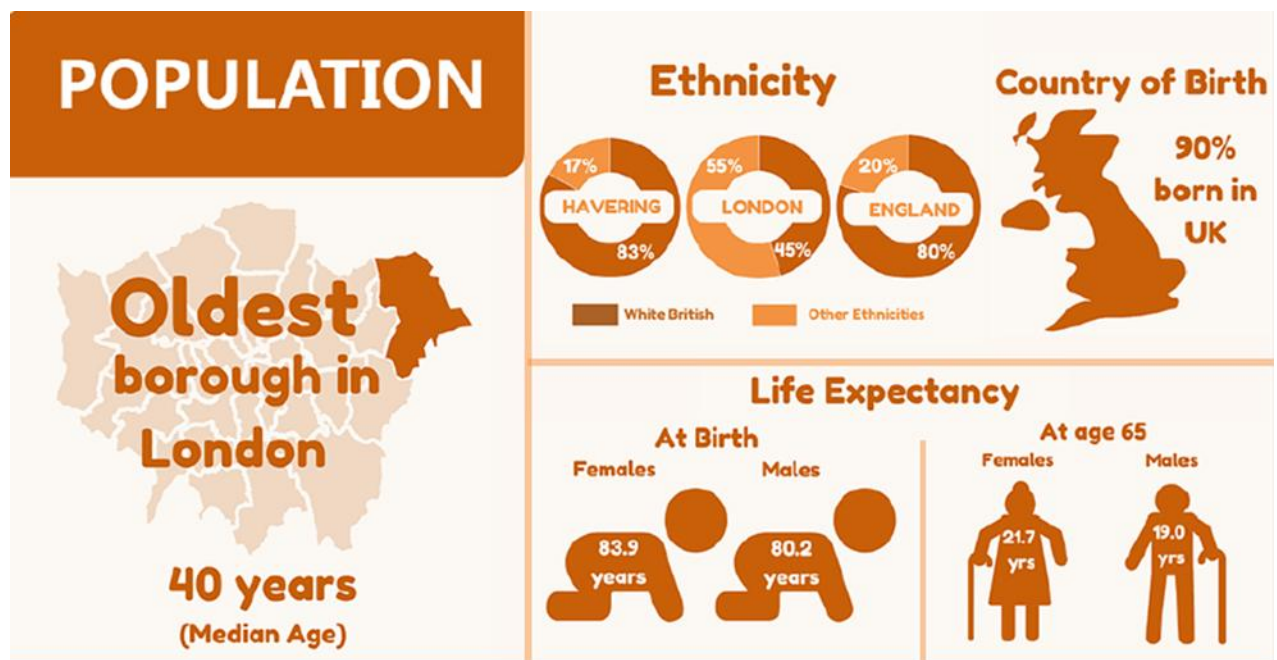
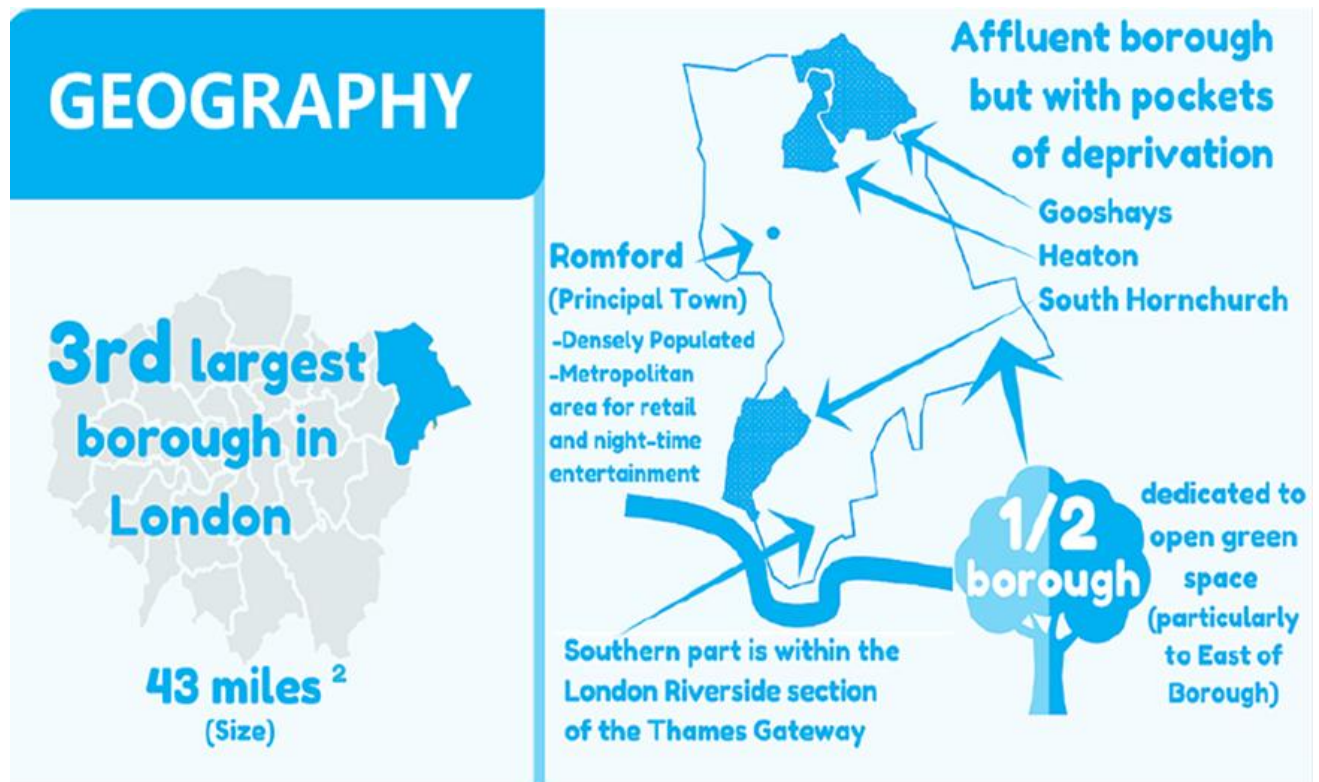


## Appendix D – Havering Demographics



# ECONOMY

**7th highest**  
proportion of  
working-age residents  
in employment in  
London

78% (Employment)

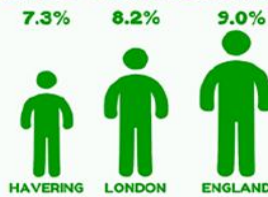
**Average gross income  
per household**



**Employment Rate  
(Overall)**



**Out of Work Benefits**



**Car Ownership**



# Child Poverty

**30-33% of  
children live in poverty\***



**Children in income-  
deprived households**



# HOUSEHOLD

**Highest**  
proportion of one-person  
households occupied by  
persons aged 65 years

48%  
(One-person Households)



**Homeowner Population**



**Household Composition  
mainly composed of**



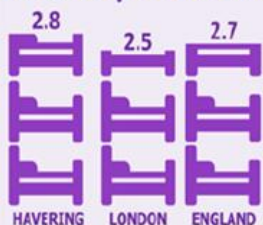
**Lone Parent Households**  
Year 2001      Year 2011



52%  
Households  
with Adults  
working

16%  
Households  
with NO Adults  
working

**Bedrooms per household**



**Homeless Households in  
Temporary Accomodation**



**Traveller Caravans  
on unauthorised sites**      **Short-term  
International Migration**



**32% of elderly  
population**

